



PCM

£1,050

****AVAILABLE EARLY JUNE****

Situated on the popular Lavender Grange estate close to Stoke Mandeville hospital is this one bedroom end of terrace house. The accommodation comprises; living room, fitted kitchen, a large bedroom and bathroom with shower over the bath. The property also benefits from; allocated parking, UPVC double glazing and gas central heating.

HOLDING FEE: £242.30

DEPOSIT REQUIRED: £1,211.50

TENANCY LENGTH: 12 MONTHS

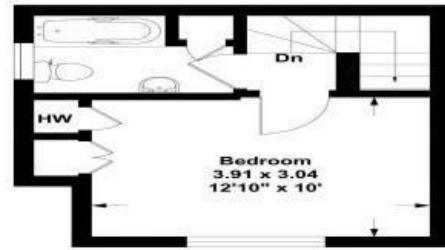
- AVAILABLE EARLY JUNE
- FITTED KITCHEN
- UNFURNISHED
- UPVC DOUBLE GLAZING
- DOUBLE BEDROOM
- OFF ROAD PARKING
- CLOSE TO TOWN
- LIVING ROOM
- GAS CENTRAL HEATING
- LAVENDER GRANGE



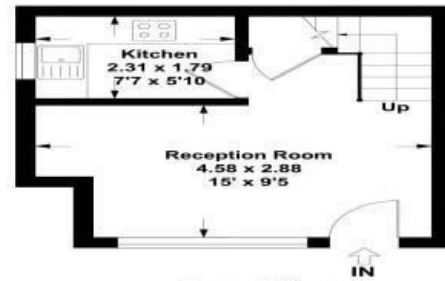
40 Holly Drive, Aylesbury, HP21 8XS

Estate Agents ~ Lettings Agents ~ Valuers ~ Independent Mortgage Advisors

Holly Drive, Aylesbury HP21 8XS
Approx. Gross Internal Area
42 Sq m - 452 Sq ft



First Floor



Ground Floor

This floor plan is not to scale. It is for guidance only and accuracy is not guaranteed.

